



# Using the Cordless Jigsaw

1. Protective equipment must be worn, including ear defenders and goggles.
2. The saw must always be held properly when working. Hands must be kept clear of the blade.
3. Stop using the jigsaw if the fingers start to tingle from vibration, hands and fingers must be kept warm to encourage blood circulation. Find out about vibration.
4. To prevent damage to the blade, check that there are no nails, screws or metal embedded in the workpiece.
5. The blade must have stopped completely before withdrawing it from the workpiece.
6. The machine must be stopped and the battery removed before making any adjustments.
7. Switch off; remove the battery and store the jigsaw in a safe place before leaving unattended.
8. If the jigsaw is not being used for a while, after removing the battery, it is safer to remove the blade as well.
9. If the equipment does not work properly do not attempt to repair it. Contact the hire company.

Please keep this leaflet safely as it may be required for future reference

# Cordless Jigsaw

The rules and procedures in force where people are at work may require the person responsible for this equipment to carry out a specific risk assessment.

## It is important to read this entire leaflet BEFORE using the Cordless Jigsaw

1. Electricity, even low voltage, can be hazardous and must always be used with care.
2. The rechargeable batteries in cordless tools may contain toxic chemicals. Care must be taken.
3. Machines that vibrate enough to make the fingers tingle can be hazardous if used for a long time. Find out about vibration.
4. This cordless jigsaw is designed to cut wood, metal, laminates and plastic using the appropriate blade. Do not use it to cut anything containing asbestos.
5. The action of this jigsaw can cause injury or damage if the machine is not used in a careful and controlled way.
6. If the operator has not used the jigsaw before they should practice on some scrap material before starting on the main task.
7. The work should be planned and thought out to ensure it will always be carried out safely.
8. The following items of personal protective clothing must be worn; Goggles – impact resistant EN166 – B or BS2092 grade 1; Dust mask – a minimum of EN149:2001 FFP3 protection; Ear muffs or plugs giving protection for levels up to 95dB(A): Gloves Rcd – using a 230v (mains) supply to charge batteries.
9. This machine must not be used by minors, or by anyone under the influence of drugs or alcohol.
10. This cordless jigsaw is designed for operation by an able-bodied adult. Anyone with a temporary or permanent disability must seek expert advice before using it.



Every effort has been made by HAE/EHA to ensure that the information given in this document and supporting material is accurate and not misleading. HAE/EHA cannot accept responsibility for any loss or liability perceived to have arisen from the use of any such document/material. Only Acts of Parliament and Statutory Instruments have the force of law and only the courts can authoritatively interpret the law.



Hire Association Europe  
2450 Regents Court  
The Crescent  
Birmingham Business Park  
Soliuhull B37 7YE

Telephone: 44 (0) 121 380 4600  
44 (0) 121 333 4109  
Email: mail@hae.org.uk  
website: www.hae.org.uk

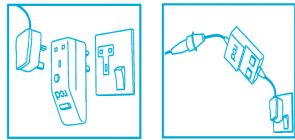
HAE  
HIRE ASSOCIATION EUROPE  
2450 Regents Court  
The Crescent  
Birmingham Business Park  
Soliuhull B37 7YE

Telephone: 44 (0) 121 380 4600  
44 (0) 121 333 4109  
Email: mail@hae.org.uk  
website: www.hae.org.uk

©Copyright Hire Association Europe April 2011

Any unauthorised reproduction – manually or electronically – is STRICTLY prohibited

1. Do not throw away old or damaged batteries – return them to the hire company.
2. Use only the correct batteries for the hire equipment as supplied by the hire company.
3. Use only the correct charger as supplied by the hire company and follow any instructions given.
4. Plug the residual current device (rcd) into the 230v socket when charging batteries. Plug the charger into the rcd.
5. Do not try to use a battery-powered tool while it is being recharged. This may overload the electrical circuits and the batteries may explode.
6. Toxic and flammable fumes are produced when charging some types of batteries.
7. Charging should be carried out in a dry, cool, well-ventilated and safe location away from other people.
8. Do not attempt to recharge ordinary batteries. They will explode!



8. Do not throw away old or damaged batteries – return them to the hire company.

# Before Starting Work...

1. Do not use this cordless jigsaw where there is a danger of explosion. It will ignite fumes from petrol, or gas cylinders.
2. Ensure that the area is clear and safe and that no-one is nearby, and that there are no distractions. Warn people to keep away.
3. If the work requires cutting into a floor or fixture, check that there are no hidden electric cables, gas or water pipes in the area to be cut.
4. Check on how the on/off switch operates – before switching the cordless jigsaw on, it must be known how to stop it.
5. This cordless jigsaw should not be used in the rain or where it might get wet.
6. Ensure that the saw is held properly, using two hands.
7. The following items of personal protective equipment (ppe) are the minimum that must be worn whenever this machine is used. Particular jobs or environments may require higher levels of protection. Impact resistant goggles must be worn (EN166 – B or BS2092 grade 1) when this machine is being used. This equipment is likely to cause noise levels up to 95 dB (A) – appropriate ear muffs or plugs must be worn, giving protection for this level as a minimum.
8. Continuous use of this machine may cause the hands to tingle from vibration. Find out about the possible hazards of vibration.
9. No loose, flapping clothing should be worn when operating this machine as it could get caught in the saw.
10. Anyone working nearby will need to wear appropriate personal protective equipment.



## CORDLESS JIGSAW

1. Check the machine, saw blades, batteries and charging unit. If anything is found damaged do not use the cordless jigsaw – contact the hire company.
2. Ensure that the saw is held properly, using two hands.
3. This cordless jigsaw should not be used in the rain or where it might get wet.
4. Check on how the on/off switch operates – before switching the cordless jigsaw on, it must be known how to stop it.
5. Most materials, except wood, will cut better if an approved cutting lubricant is used.
6. Ensure the correct type of blade is used, recommended by the hire company for the material being cut.
7. Switch the cordless jigsaw off, and if the equipment has a lock-off switch (perhaps on the battery box), switch it off or temporarily remove the battery, before changing the blade.
8. Ensure the correct type of blade is used, recommended by the hire company for the material being cut.
9. Toxic and flammable fumes are produced when charging some types of batteries.
10. Continuous use of this machine may cause the hands to tingle from vibration. Find out about the possible hazards of vibration.
11. No loose, flapping clothing should be worn when operating this machine as it could get caught in the saw.
12. Anyone working nearby will need to wear appropriate personal protective equipment.

## BLADES

1. Switch the cordless jigsaw off, and if the equipment has a lock-off switch (perhaps on the battery box), switch it off or temporarily remove the battery, before changing the blade.
2. Ensure the correct type of blade is used, recommended by the hire company for the material being cut.
3. Most materials, except wood, will cut better if an approved cutting lubricant is used.
4. Ensure the blade is fitted correctly.
5. No loose, flapping clothing should be worn when operating this machine as it could get caught in the saw.
6. Anyone working nearby will need to wear appropriate personal protective equipment.